

Parts and Accessories.

Installation instructions.



Retrofit i-Pod Interface

MINI ONE (R50)

MINI COOPER (R50)

MINI CONVERTIBLE (R52)

MINI COOPER S (R53)

Retrofit kit No.: 65 41 0 395 293

Installation time

The installation time of approx. 0.75 hours can vary depending on the condition and equipment of the vehicle.

Important information

These installation instructions are mainly intended for use in the MINI dealership network and by authorised BMW Service Centres.

The target group of these installation instructions are technical personnel trained on MINI vehicles with corresponding technical know-how.

All work is to be carried out with the aid of currently valid MINI repair instructions, schematic circuit diagrams, maintenance manuals and working instructions in rational order with the specified tools (special tools) while paying particular attention to valid safety regulations.

In order to avoid unnecessary additional expenditure/costs, if any problems regarding installation, assembly or operation are encountered, after spending a little time on attempting to finding the problem (approx. 0.5 hour), an enquiry, including the vehicle identification number, part number of the installed retrofit kit and a detailed description of the problem, should be sent immediately via the Aftersales Assistance Portal (ASAP) to Technical Support.

Do not archive the printout of these Installation Instructions as daily updates are conducted through ASAP!

Refer to ASAP for explanations of the pictographs.

All illustrations show LHD vehicles. Carry out the same procedure analogously on RHD vehicles.

Pictographs:



identifies information that draws attention to danger/hazards.



identifies information that draws attention to specific requirements.

◀ identifies the end of an information or warning text.

Subject to technical modifications.

When installing cables/lines, particular attention must be paid to ensure that they are not bent, kinked or damaged. The costs incurred will not be reimbursed by BMW AG.

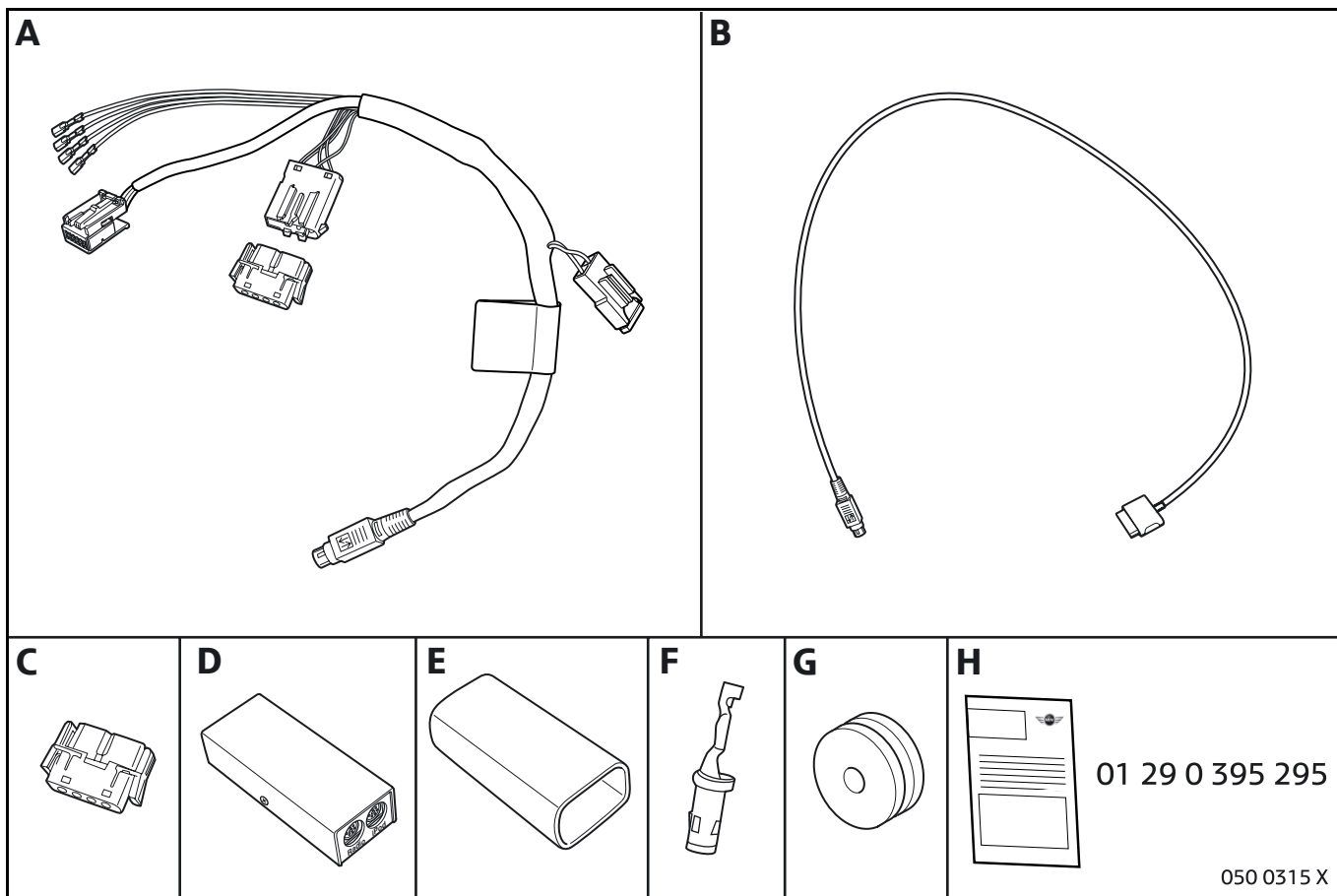
Required special tools

None

Contents

Section	Page
1. Parts overview	3
2. Preparatory work	4
3. Installing i-Pod Interface	5
4. Finishing off and encoding	7
5. Schematic circuit diagram/wire colours	8

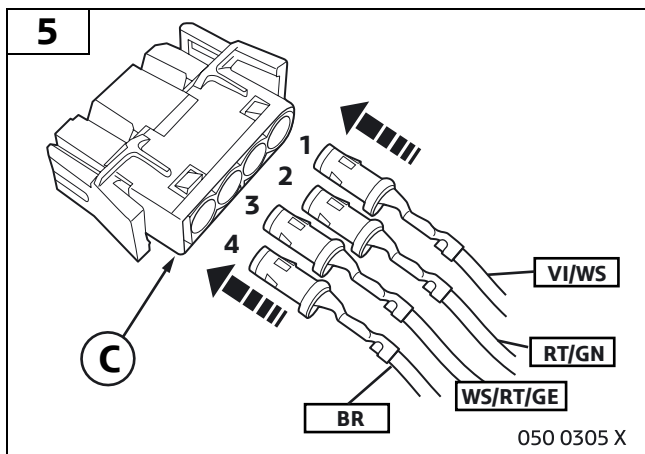
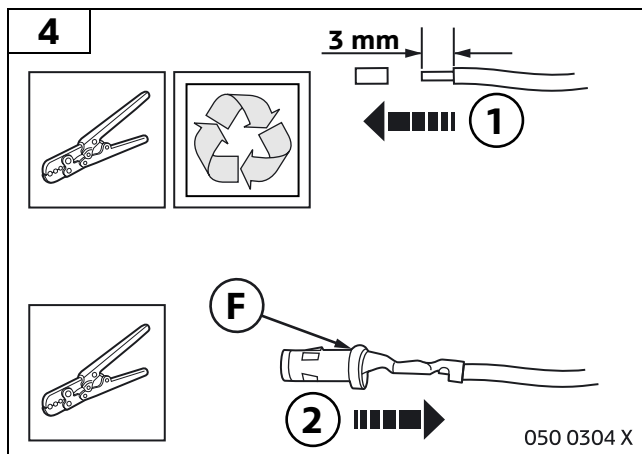
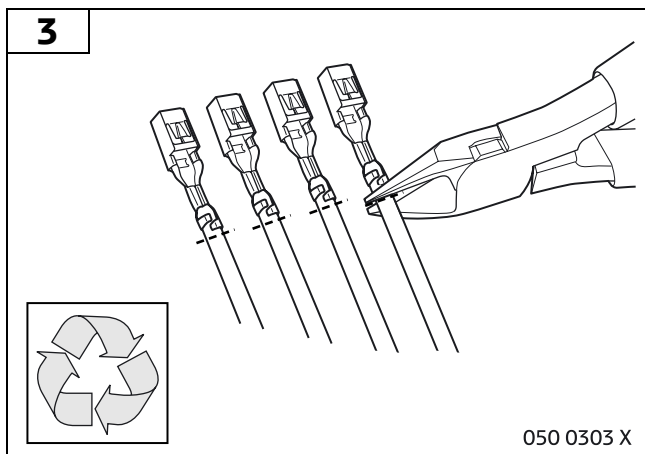
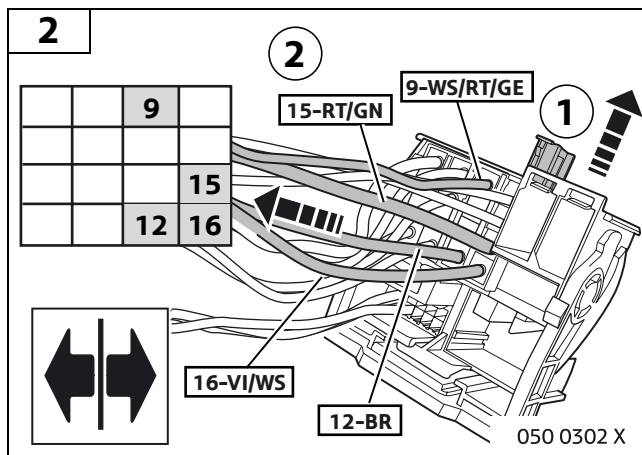
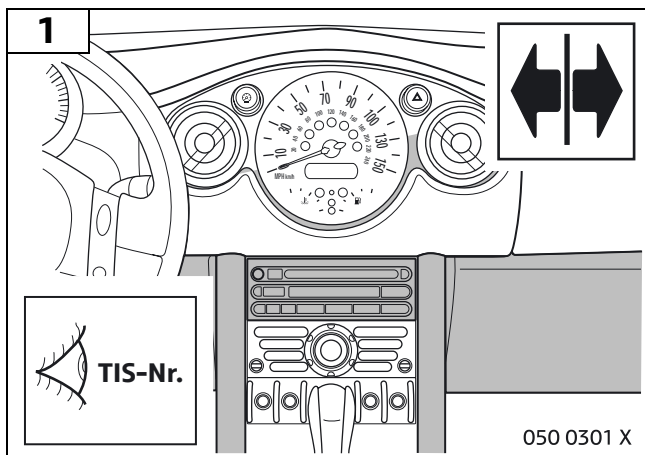
1. Parts overview



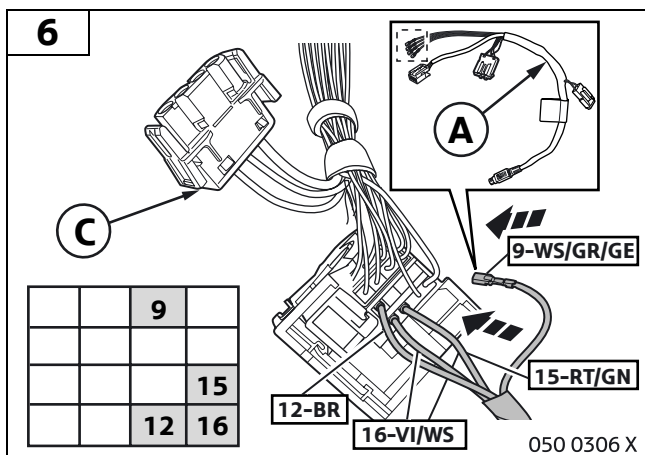
2. Preparatory work

	TIS No.
Perform quick test	---
Disconnect negative terminal of battery	12 00 ...
Remove the following components	
Radio	65 11 030
Glove compartment	51 16 360

3. Installing i-Pod Interface

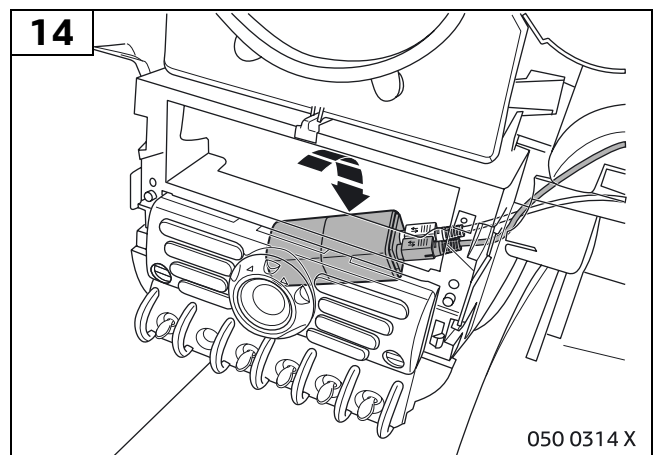
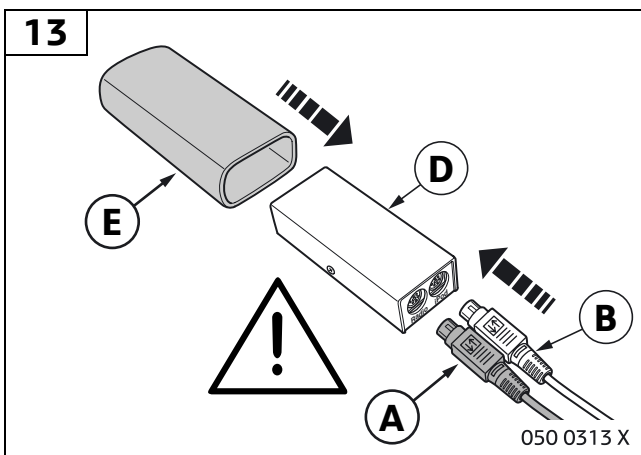
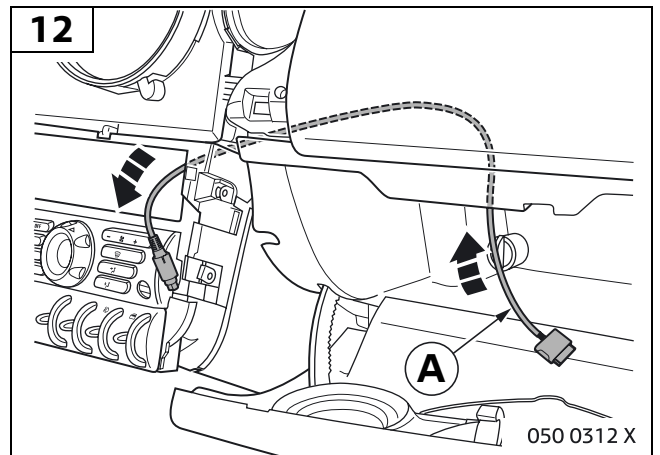
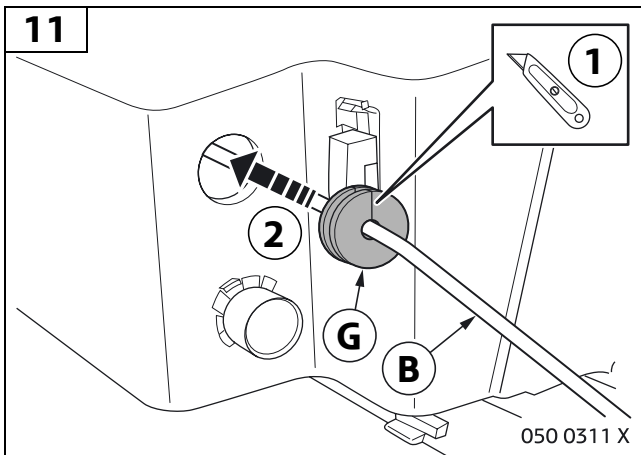
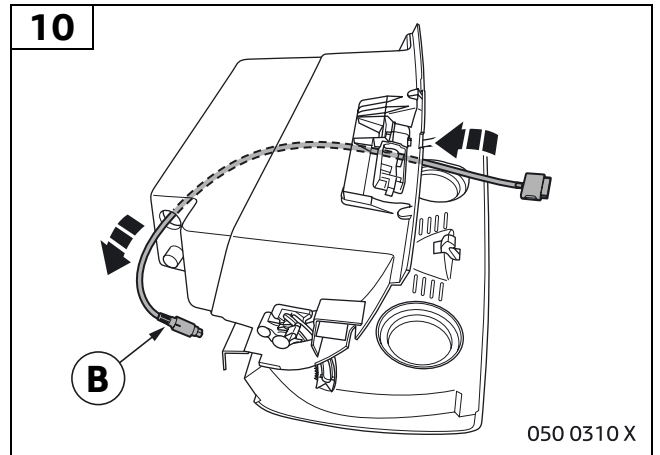
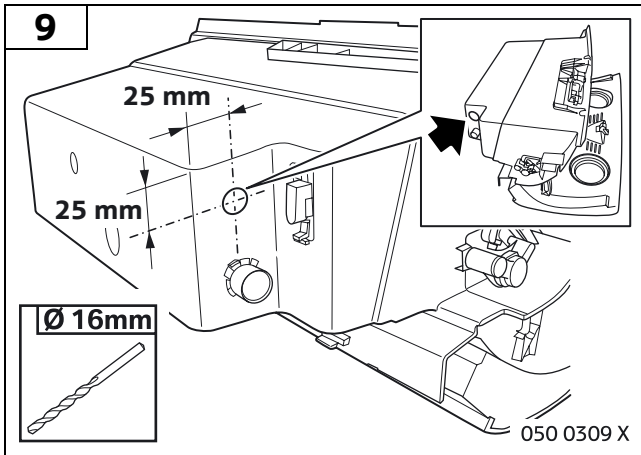
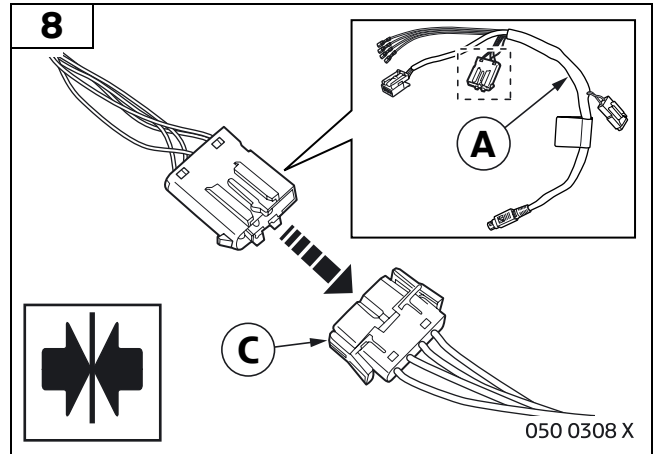
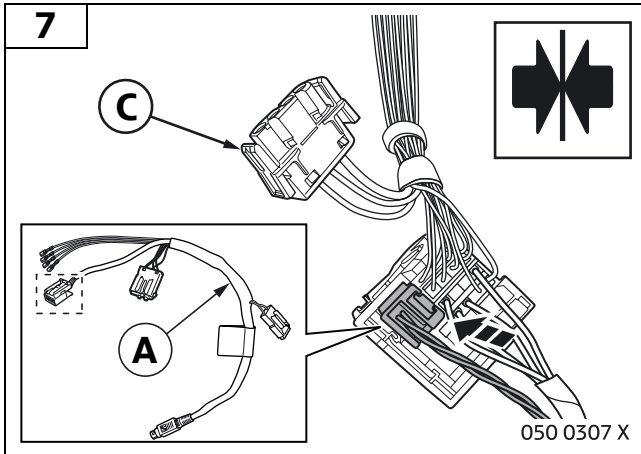


PIN number	Description
1	Terminal - R
2	Terminal 30
3	I/K-bus
4	Terminal 31



PIN number	Description
9	I/K-bus
12	Terminal 31
15	Terminal 30
16	Terminal - R

3. Installing i-Pod Interface

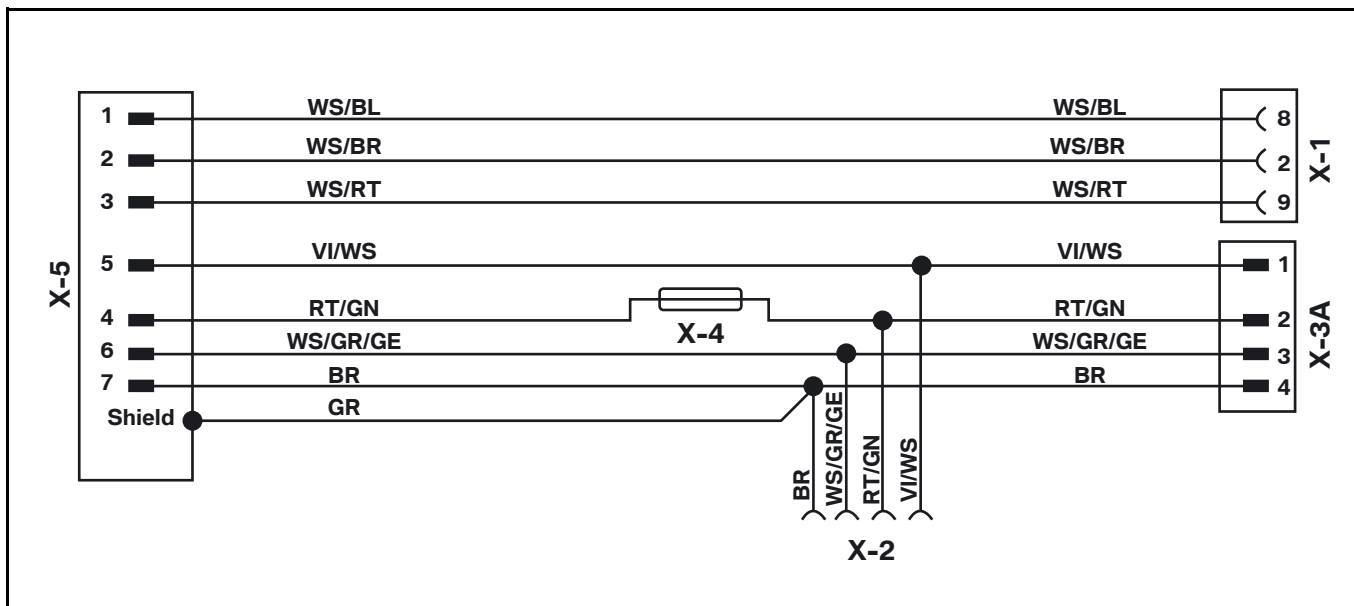


4. Finishing off and encoding

The retrofit system does not require encoding.

- Reconnect battery
- Perform quick test
- Reassemble vehicle in reverse order of removal.

5. Schematic circuit diagram / wire colours



Key

- X-1 Connection, radio
- X-2 Connection, MPQ socket contact
- X-3A Connection, 4-pin
- X-4 Connection, fuse
- X-5 Connection, 7-PIN DIN connector

Wire colours

	D	GB	E	F	I	P	NL	S
BL	Blau	Blue	Azul	Bleu	Blu	Azul	Blauw	Blå
BR	Braun	Brown	Marrón	Marron	Marrone	Castanho	Bruin	Brun
GE	Gelb	Yellow	Amarillo	Jaune	Giallo	Amarelo	Geel	Gul
GN	Grün	Green	Verde	Vert	Verde	Verde	Groen	Grön
GR	Grau	Gray	Gris	Gris	Grigio	Cinzento	Grijs	Grå
RT	Rot	Red	Rojo	Rouge	Rosso	Vermelho	Rood	Röd
SW	Schwarz	Black	Negro	Noir	Nero	Preto	Zwart	Svart
VI	Violett	Violet	Violeta	Violet	Viola	Violeta	Violet	Violett
WS	Weiß	White	Blanco	Blanc	Bianco	Branco	Wit	Vit